

AD-EB Press Brake

AD-EB Press Brake



High Precision Bending System



AD-EB has a unique crowning system. Its special frame structure enables crowning during bending and does not require additional parts. The drive system is belt driven and does not require hydraulic oil. First setup and calibration are completed quickly and the machine works for a long time with the initial setup.

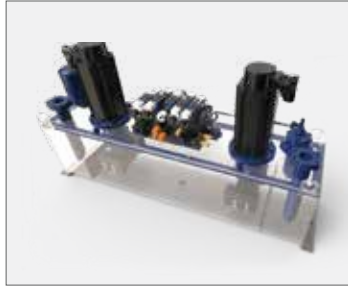
- Servo Electrical Technology
- Accurate Belt-Pulley System
- High Repeatable and Accurate Bending Throughout the Sheet
- No Crowning Needed
- BLVT Safety System
- Compact Frame
- Low Maintenance Cost
- Smart Energy Consumption



• System with Electro-Servo Drives

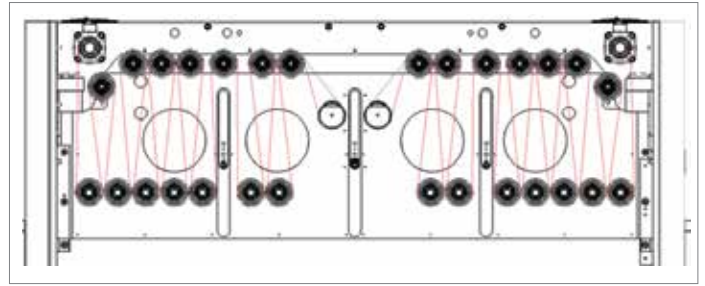


Standard Hydraulic Press Brake

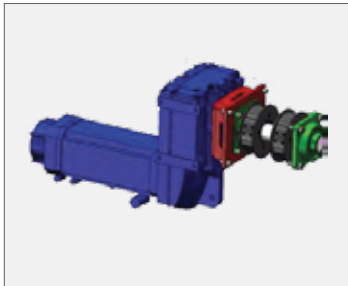
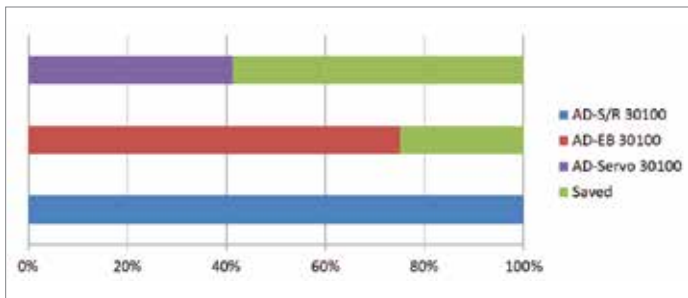


Servo Hydraulic Press Brake

• Accurate Belt-Pulley System

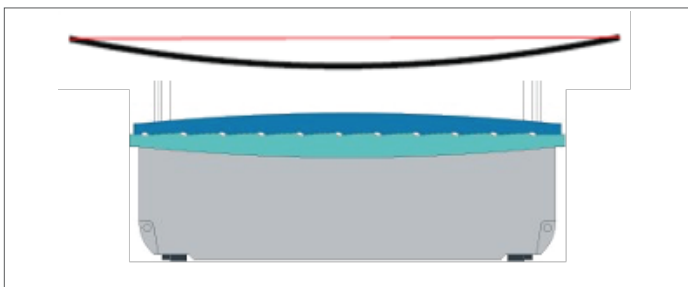


• Servo-Electro Press Brake



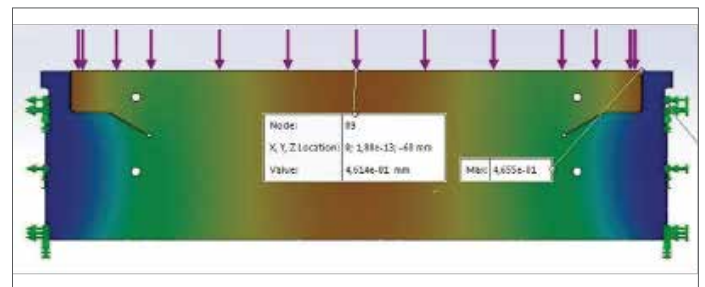
• Slotted Frame (No Need Crowning)

Crowning needed.



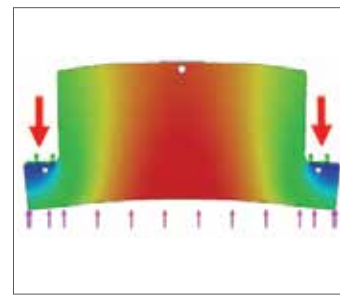
Standard Frame

No crowning needed.



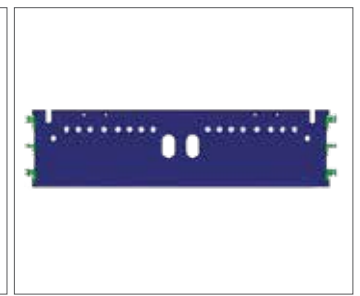
Slotted Frame

• Correct bending at every point of the machine with the force spreading along the upper table



Hydraulic Press Brake

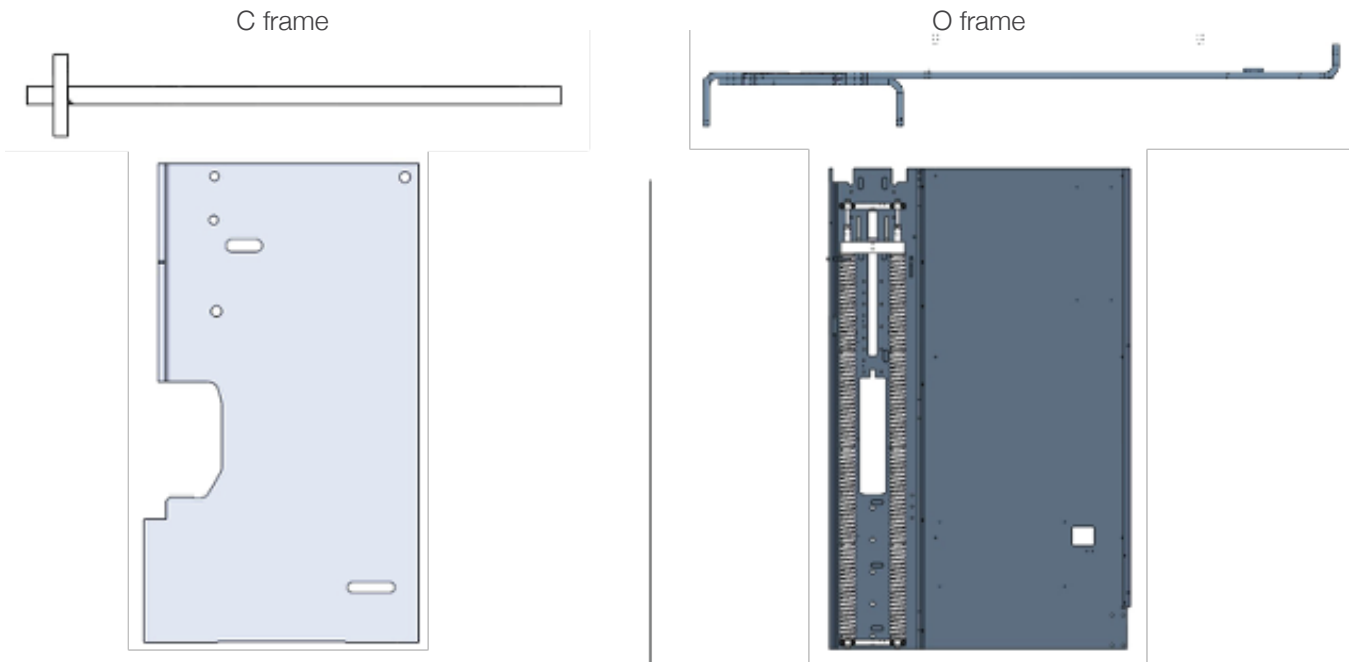
Force from 2 points with cylinder.
Bending must always be done in the middle of the machines.



Belt System Press Brake

Distributed force on the table.
You can bend at any desired point.

- Compact Frame



Frame deflection values are also important for correct bending angle. Minimum deflection is provided in that type of body.

TECHNICAL DATA

AD-EB	2580
Stroke	320 mm
Daylight	500 mm
Rapid Speed	105 mm/sec.
Return Speed	105 mm/sec.
AD-EB	30100
Stroke	320 mm
Daylight	500 mm
Rapid Speed	90 mm/sec.
Return Speed	90 mm/sec.
AD-EB	30135
Stroke	320 mm
Daylight	500 mm
Rapid Speed	100 mm/sec.
Return Speed	100 mm/sec.