

DURMA

Today Tomorrow Forever...

October 2017 Newsletter

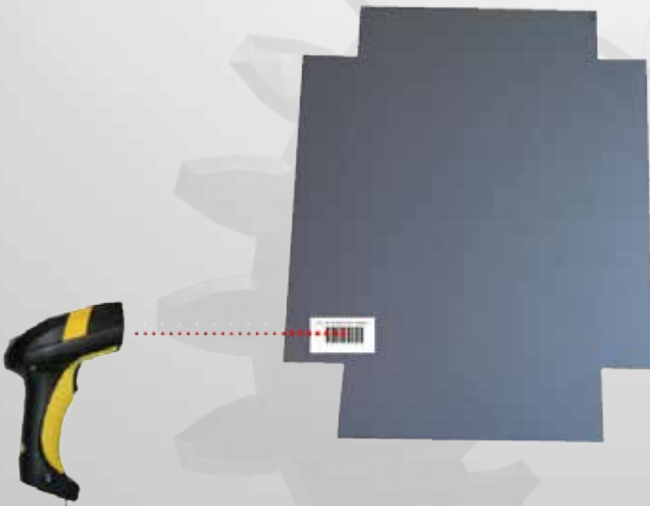
Press Brake fast program selection - Barcode Reader

DURMA Press Brake Machine became more useful with Barcode Reader

Managing many small and different production batches can be complicated. Dozens of unique pieces mean hundreds of drawings and bending sequences. Simplifying the operator's job means reducing production times and mistakes, increasing overall efficiency. Increasing efficiency also means facilitating the communication among all company departments, bringing production and engineering even closer by improving the information flow.

For this reason, **DURMA** merged barcode reader systems with Press Brake Machines by utilizing the advantages of technology in transport centers.

In order to load a bending program, one has just to scan the code. This code can be printed on a production note, or engraved directly on the sheet metal blank. The reader detects it and selects the defined program from machine control panel.



This code reader communicates with the CNC through USB connection. It is able to read traditional 1D bar codes (EAN, Code128, Code39 Extended, etc) as well as the newer and more efficient 2D codes (DataMatrix, QRCode, ecc).

* Only for DELEM Control Unit.